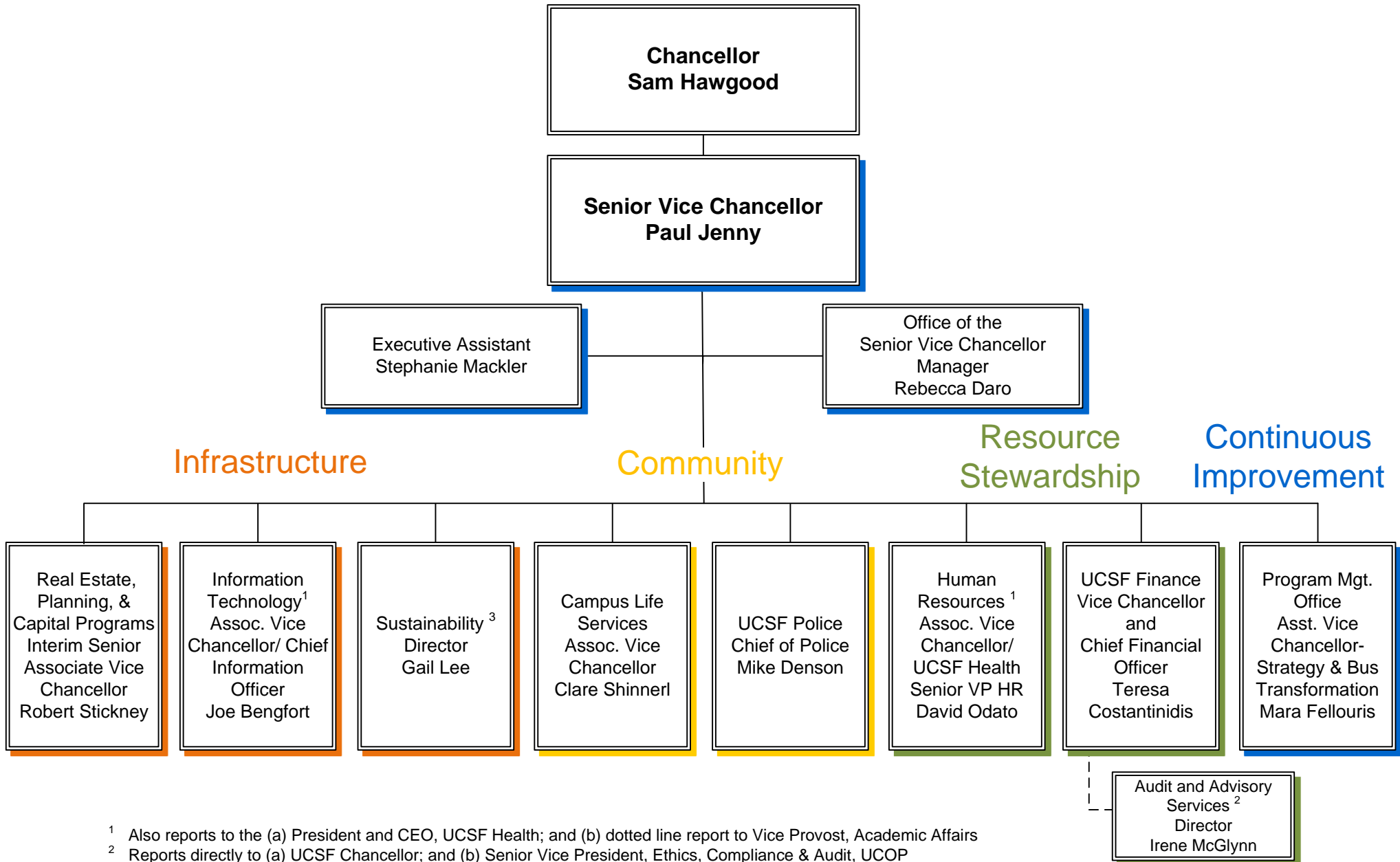




University of California, San Francisco
Financial & Administrative Services
 Organization Chart

MARCH 2017

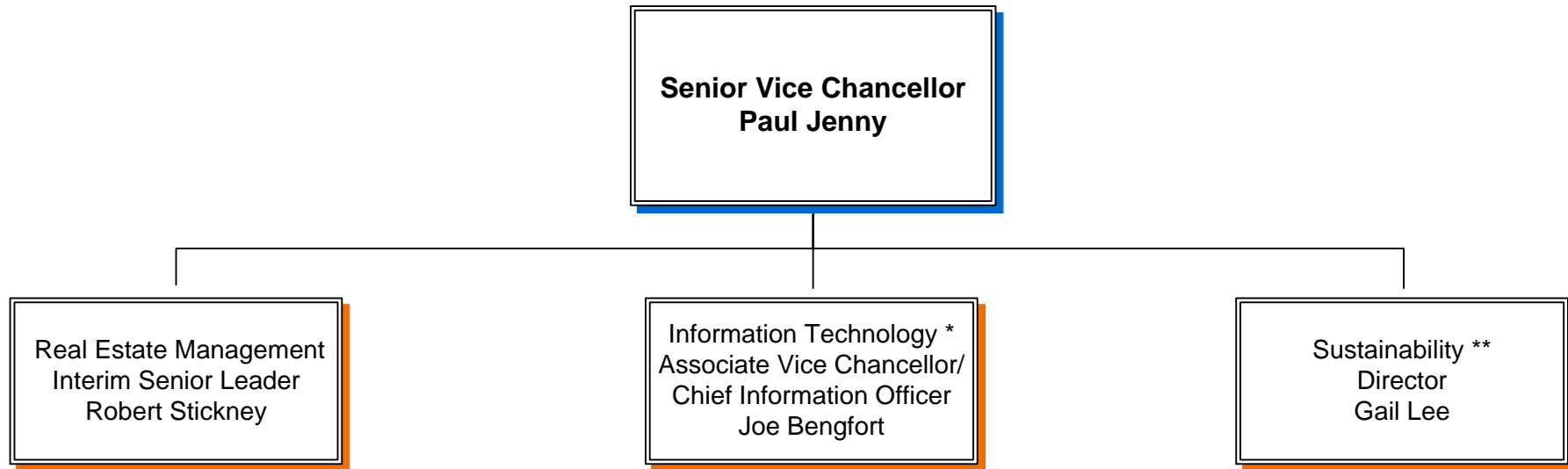


¹ Also reports to the (a) President and CEO, UCSF Health; and (b) dotted line report to Vice Provost, Academic Affairs

² Reports directly to (a) UCSF Chancellor; and (b) Senior Vice President, Ethics, Compliance & Audit, UCOP

³ Dotted line report to the Associate Chancellor

Infrastructure



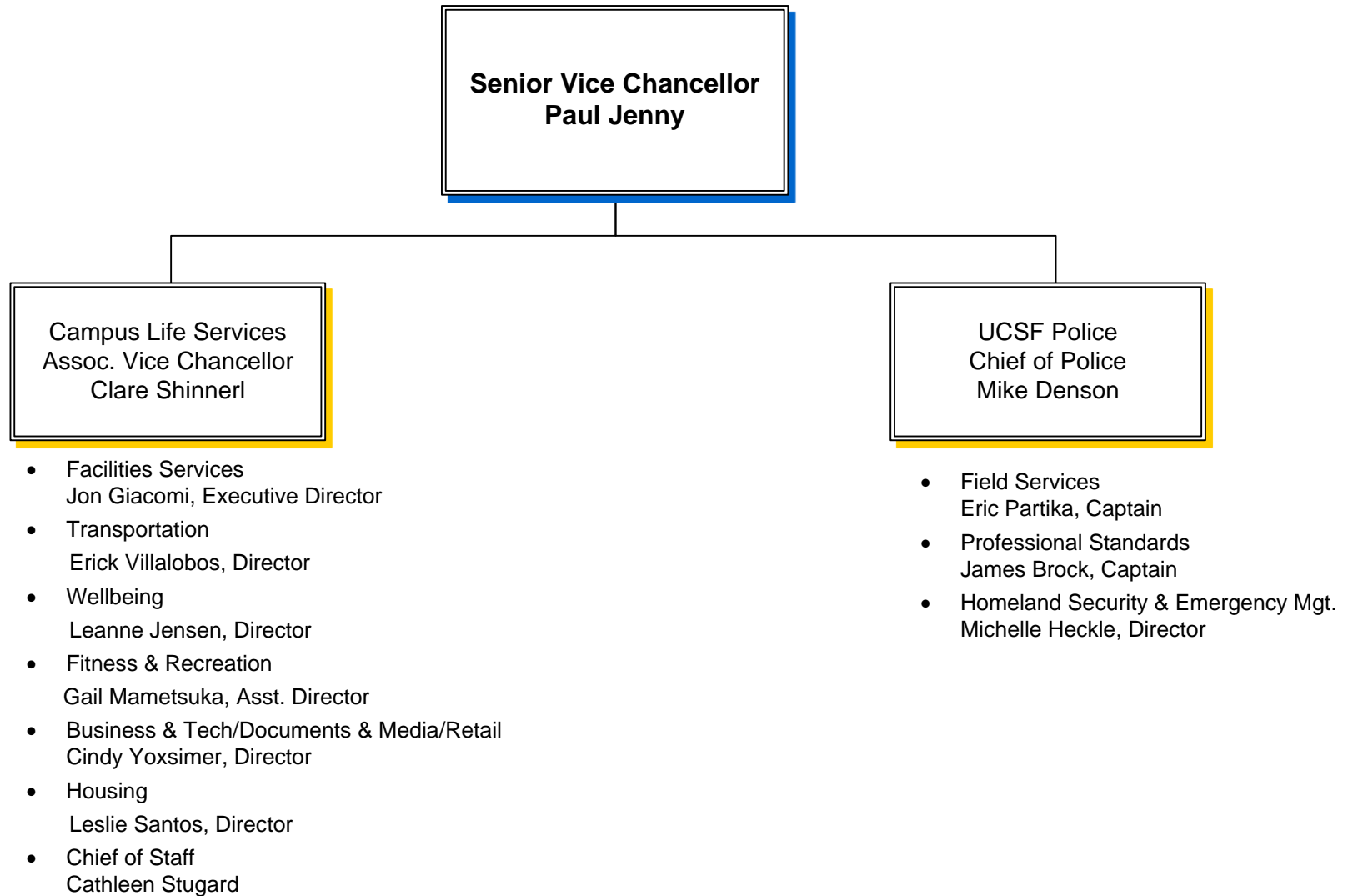
- Capital Programs
Michael Bade, Assoc. Vice Chancellor
Campus Architect
- Campus Planning
Lori Yamauchi, Assoc. Vice Chancellor
- Real Estate Assets & Development
Esther Morales, Asst. Vice Chancellor

- IT Strategy
Pierre Brickey, Director
- Enterprise Applications
Jane Wong, Executive Director
- Security
Patrick Phelan, Director
- Office of the CIO
Ryan Ball, Director
- Enterprise Information & Analytics
David Dobbs, Executive Director
- Customer Service
Sian Shumway, Director

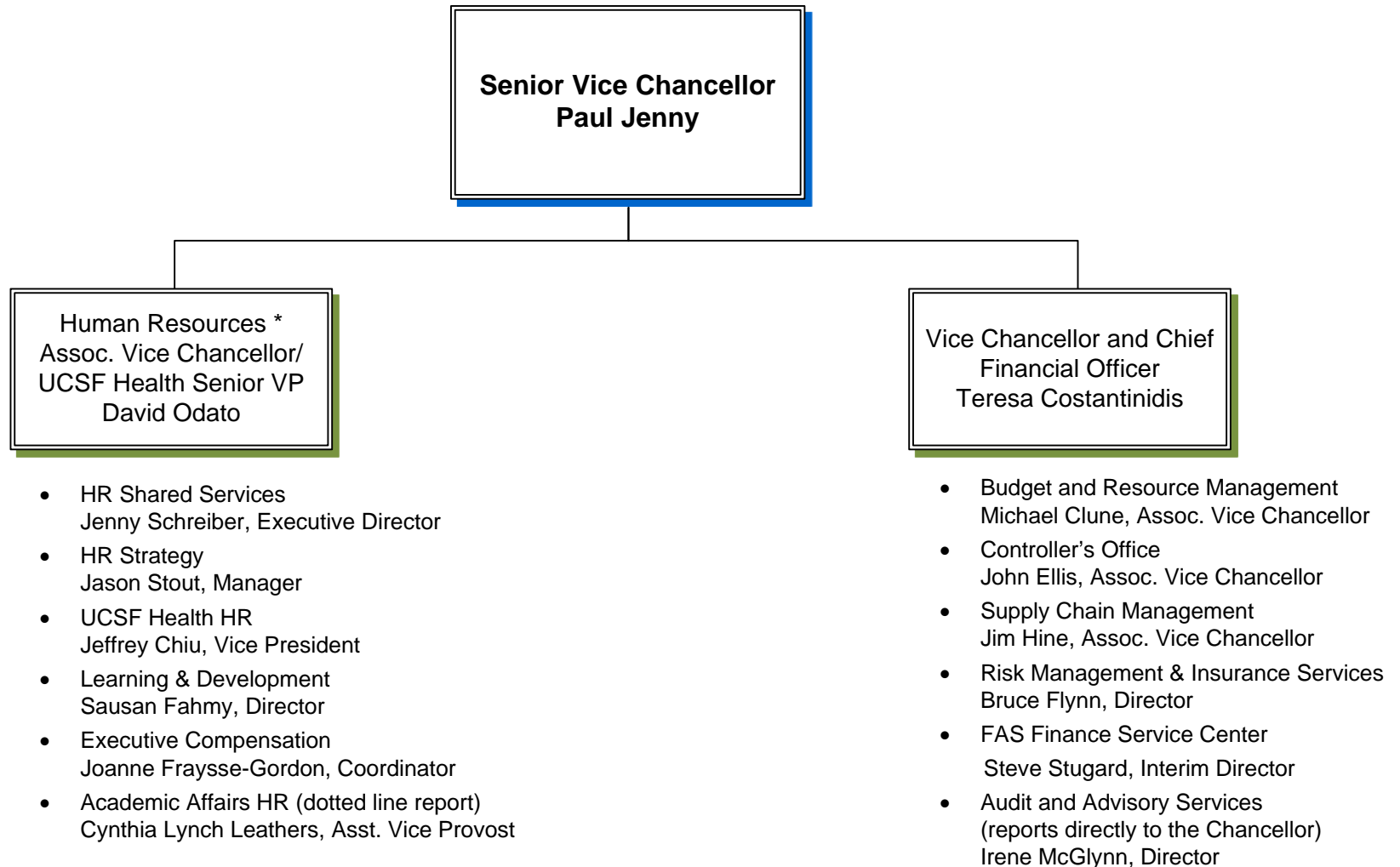
* Also reports to the (a) President and CEO, UCSF Health; and (b) dotted line report to Vice Provost, Academic Affairs

** Dotted line report to the Associate Chancellor

Community



Resource Stewardship



* Also reports to the (a) President and CEO, UCSF Health; and (b) dotted line report to the Vice Provost, Academic Affairs

Continuous Improvement

